

Events Pricing Guide



GRIFFISS
INSTITUTE

INNOVARE
ADVANCEMENT CENTER

The sign for the Innovare Advancement Center, featuring a glowing blue logo above the text. The building facade is dark blue with a large window showing interior lights.

Table of Contents

The Innovare Advancement Center is the perfect place to host your next event! Whether you're planning a small meeting or a large community event, we invite you to come and check out our facilities; you'll find cutting-edge, technology-enhanced classrooms, meeting spaces, and an auditorium. Our team will happily walk you through the coordination of your event from start to finish.

Event Center

Basic.....	4
Standard.....	4
Premium.....	5

Skydeck

Rates.....	7
------------	---

Classrooms

Rates.....	9
------------	---

Add-on's

AV.....	10
Facilitation Resources.....	10
Event Support and Services.....	11

For more information, please reach out to our Events Manager Kelly Poynter at kpoynter@griffissinstitute.org.

Event Center

"My team had an **outstanding experience** hosting a week-long leadership development program at the Griffiss Institute. The facilities were **beautiful**, and the customer service was **top-notch**."

Rates

Our event center is a great place to hold your next conference, community event, or anything in-between! The full room can accommodate up to 80 people in standard classroom-style seating, and up to 150 in amphitheater-style.

Basic

1/2 Event Center \$ 1050 • Full \$2000

Room includes:

- WiFi
- Selection of standard furniture configurations
 - Classroom, static, U-shape
- Two (2) carafes of Utica Roasting Company Coffee with creamers, sweeteners, stirrers, cups, and lids.
- Two (2) Pitchers of water with cups
- Podium
- Zoom cart/Presentation Screen

Standard

1/2 Event Center \$ 1150 • Full \$2100

Includes everything in the Basic package, plus:

- One (1) carafe of Utica Roasting Company Coffee refill
- One (1) water pitcher refill
- One (1) Handheld microphone and speakers
- Two (2) Whiteboards with dry-erase markers

Premium

½ Event Center \$ 1750 • Full \$2750

Our most comprehensive package includes:

- Choice of custom furniture configurations beyond: classroom, static, u-shape
- Unlimited Refills of Carafes of Utica Roasting Company Coffee with creamers/sweeteners/stirrers/cups/lids
- Unlimited Refills of Pitchers of Water with cups
- Podium
- Zoom cart/Presentation Screen, Presentation laptop with advancer/pointer
- Choice of microphones: Pedestal, Handheld, Lavalier
- Four (4) Whiteboards with dry-erase markers
- Mini fridges stocked with bottled water, soft drinks
- AV Support (minimum 2 hours, maximum 6 hours)
- Day of catering support (minimum 2 hours)

Looking for something else? Browse page 10 for a complete list of additional services that can be added to any package!



Skydeck

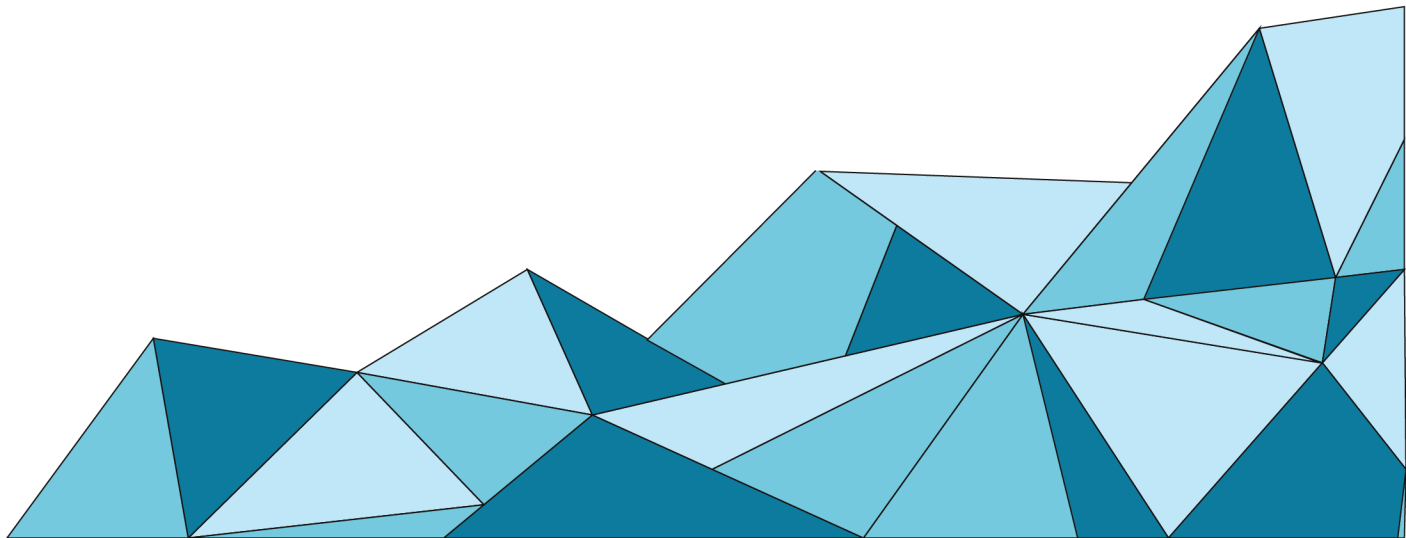
*"The Griffiss staff went **above and beyond** to provide timely support and made sure we had everything we needed during our programs."*

Rates

Host an event with a view! This unique open-innovation space sits over the flightline and includes access to a kitchenette area. Depending on your needs, the space can include tables and chairs or be transformed to amphitheater-style seating, increasing capacity.

Skydeck - Capacity: 36-50

Hourly rate..... \$175 hour



Classrooms

"They made my job *easy*, and I look forward to coming back for our next event."

Rates

Our classroom-style meeting spaces are perfect for your next business endeavor. Choose from one of four versatile spaces to host your next meeting and enjoy cutting-edge technology that allows you to connect with your team wherever they are.

Shannon - Capacity: 21

Hourly Rate.....\$65

Einstein - Capacity: 15

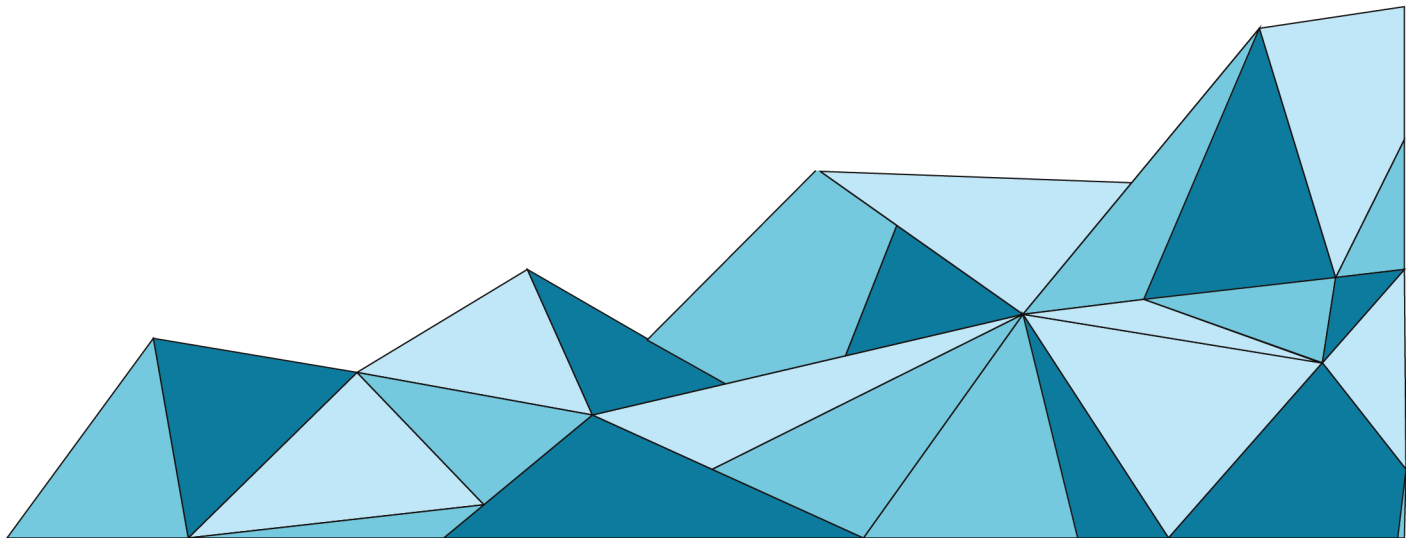
Hourly Rate.....\$45

Newton - Capacity: 12

Hourly Rate.....\$45

M&T Boardroom - Capacity: 12

Hourly Rate.....\$65



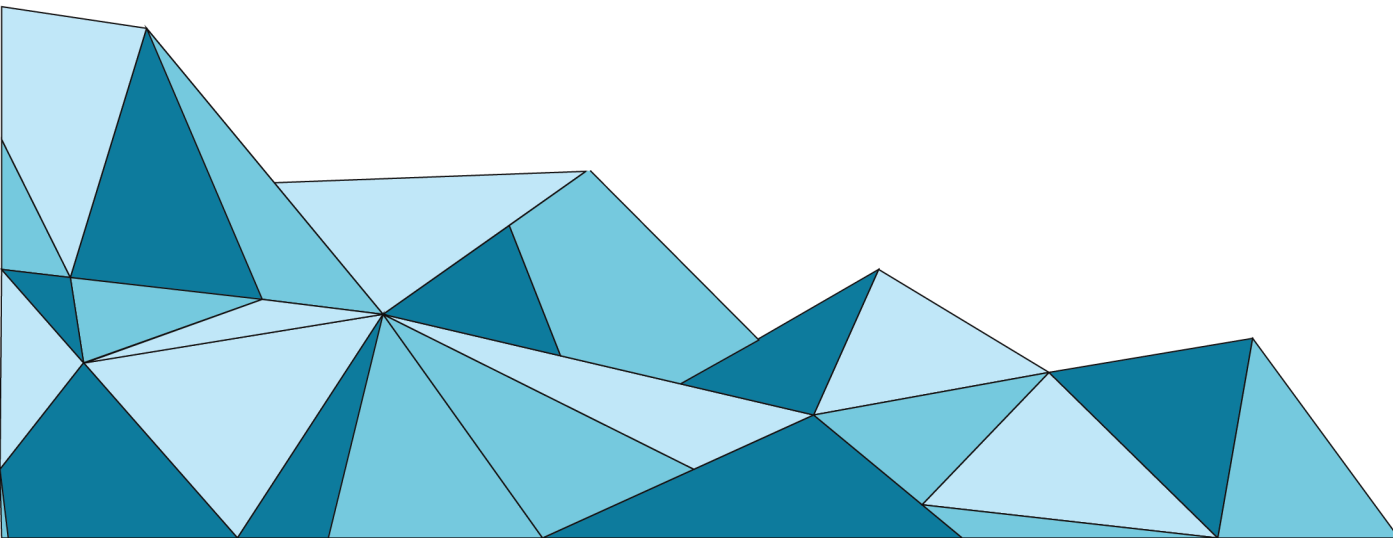
Additional Services

AV

- **Zoom Cart/Presenter Screen**
 - Event Center (Daily rate)\$150
 - Classrooms (Daily rate).....\$90
 - Rolling Mobile Cart.....\$60
- **Presentation computer with advancer/pointer.....\$75**
- **Microphones/Speakers (Per singular use).....\$75**
 - Pedestal, Handheld, Lavalier, Headset
 - 3 Package Deal (Q&A set up)\$150
- **Presentation Package.....\$250**
 - Zoom Cart/Presentation Screen, Microphone/Speakers,
Presentation laptop, Advancer/Pointer

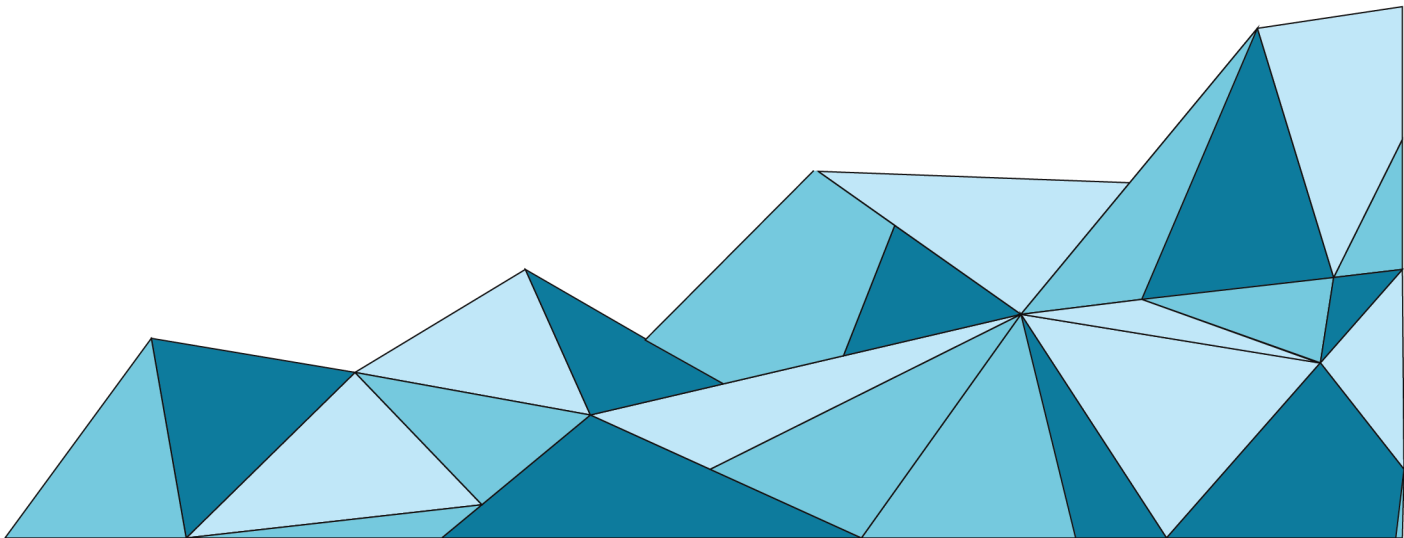
Facilitation Resources

- **Flipchart Package.....\$40**
 - Includes Flipchart easel, Flipchart pad, markers
- **Post-It Pad Package.....\$50**
 - Includes Flipchart easel, Post-It Flipchart Pad, markers
- **Whiteboard Package.....\$60**
 - Up to (4) whiteboards on rollers with markers
- **Powered Tables.....\$125**
 - Power strips/cabling provided to tables in GI Event Center



Event Support and Services

- **AV Support** (2 hours minimum).....\$200
Assist with connectivity, troubleshooting on day of event
- **Day of event catering support** (2 hours minimum).....\$175
Receive food deliveries, set up and break down on day of event
- **Presentation slide deck management**
Includes speaker and transitional slide creation....starting at \$175
- **Registration Management**.....starting at \$500
Registration form, attendee tracking, badging, check-in
- **Custom furniture configuration**.....\$100
Beyond classroom/static/u-shape/boardroom
- **Photographer** (per hour).....\$250
- **AV Support Plus**
Includes pre-event planning and dry-run.....**Email for details**
- **Catering Support Plus**
Includes planning and execution.....**Email for details**
- **Recorded Meeting****Email for details**
- **Broadcast Quality Production**.....**Email for details**
Multiple camera production, producer, director, PA's, recorded



**Looking for something else?
Contact us!**

Kelly Poynter, Events Manager
kpoynter@griffissinstitute.org
griffissinstitute.org

Innovare Advancement Center
592 Hangar Road STE 200
Rome, NY 13440



GRIFFISS
INSTITUTE



INNOVARE
ADVANCEMENT CENTER